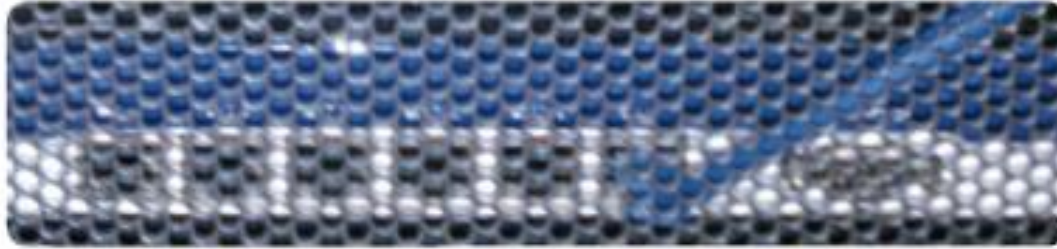


# **XRoads** Networks

## **Product Overview**

V 4.0

# About XRoads Networks



- XRoads Networks is the inventor and the leading provider of **Unified Bandwidth Management (UBM)** solutions on the market today.
- The EdgeXOS platform combines multiple network management functions in a single platform to provide: **Dynamic Application QoS**, **Application Balancing & Reliability**, and **Application Optimization**.
- The EdgeXOS platform is simple to use, includes free installation support, and leverages each feature set to provide enhanced product value which ensures a **fast return on investment**.

# XRoads Networks Customers

XRoads Networks has been providing networking solutions for over 10 years and is a leader in designing **platforms which optimize cloud computing**. Our customer base includes corporations, government institutions, colleges, school districts and small to mid-sized business around the world in over 50 countries.



# Unified Bandwidth Management

UBM enables **faster and more reliable application delivery** across the cloud and between remote offices through traffic shaping, load balancing, and network optimization.

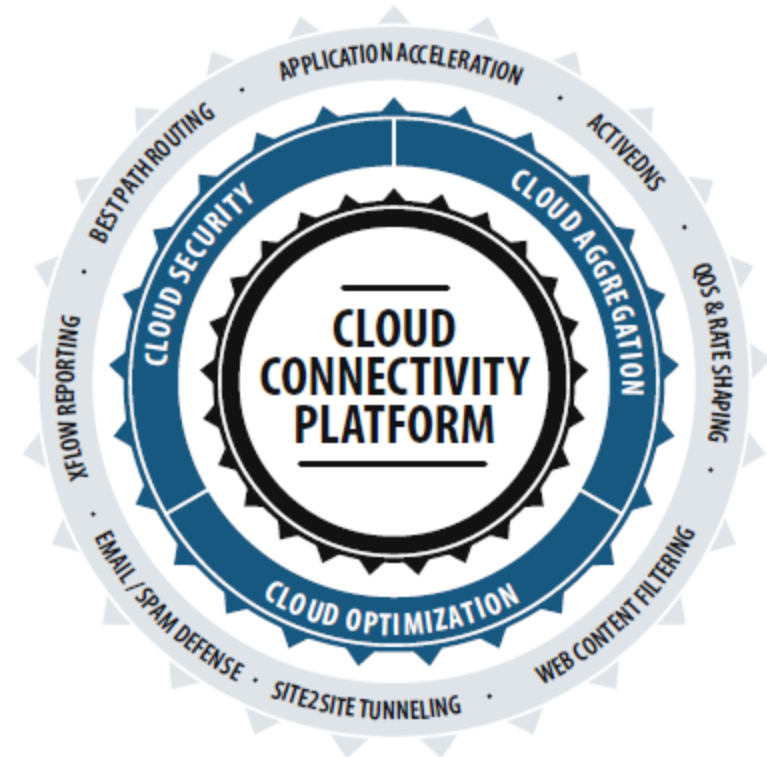
- UBM solutions are designed with **cloud computing** in mind and deliver the functionality required to improve LAN/WAN connectivity.



- Our UBM platforms include three core technologies titled **Dynamic Bandwidth Mgmt (DBM)**, **App Acceleration (MSA)**, and **MultiWAN Optimization (S2S)**.

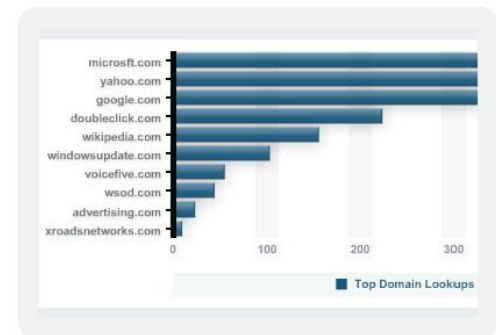
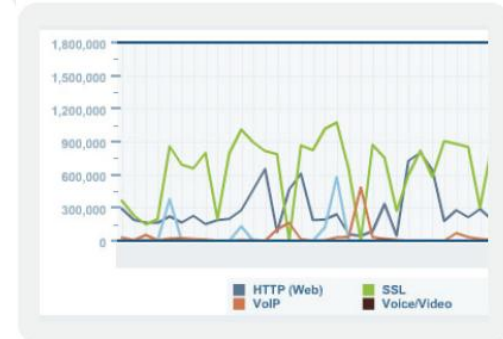
# XRoads Networks Technology

- XRoads Networks has developed a number of unique capabilities within its EdgeXOS platforms. Our focus on integrating multiple ISP connections, or **MultiWAN**, is a core element to its various capabilities.
- With its MultiWAN capability the platform comes with built-in reliability and scalability which makes the EdgeXOS platform uniquely suited to enhance and optimize **cloud connectivity**.



# Real-Time Reporting

- In order to properly manage network resources it is critical to understand how the network is being utilized.
- The **XFlow Reporting Engine (XRE)** was designed to do just that, with its built-in packet analyzer and backend database, the reporting engine can collect, summarize, and display detailed network information.



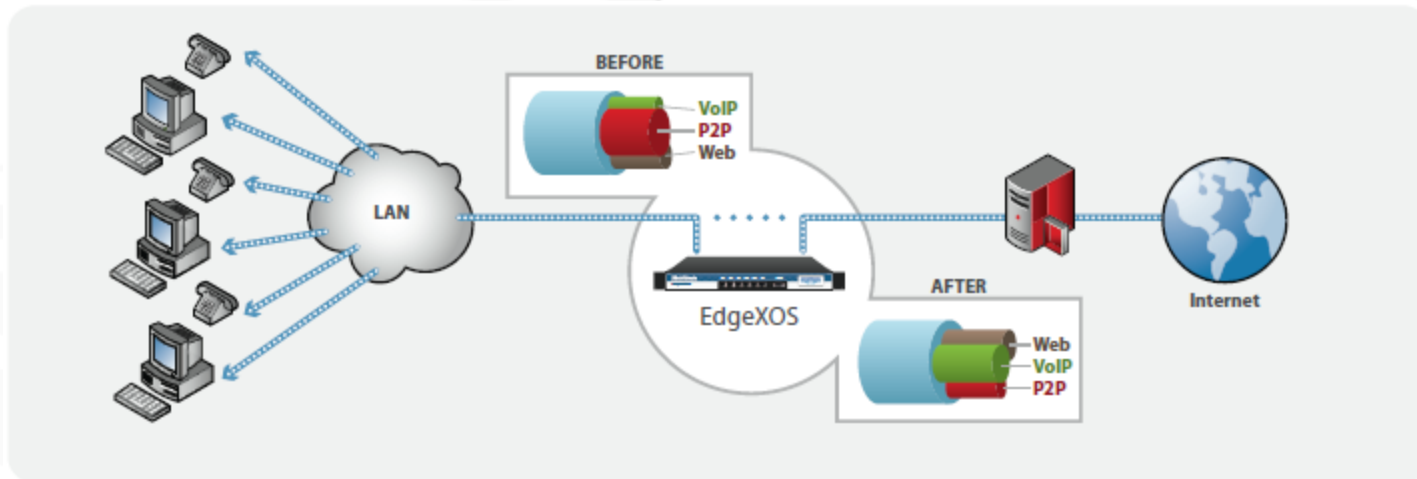
# EdgeXOS Management

- The EdgeXOS appliances are managed via a simple to understand **web-based interface** and can also be configured using a simple text-based file.
- The web interface is accessible via any standard browser with flash support and requires **no Java** or other external applications.
- The platform also includes complete **email alerting, syslog, SNMP, and firewall logging**. The platform also supports sFlow packet exporting for long-term traffic capture and playback.



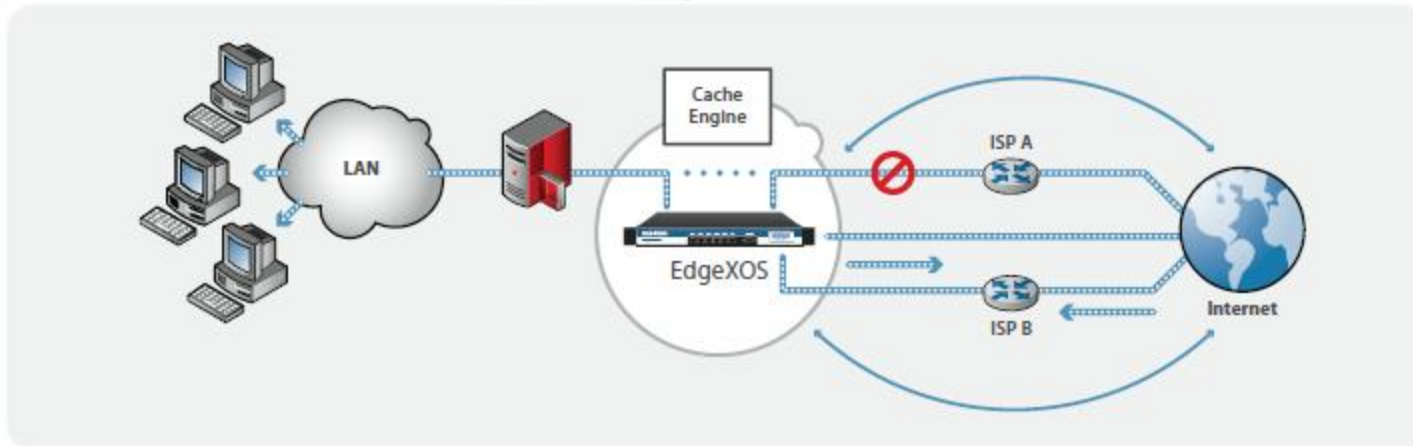
# Dynamic Bandwidth Management

- Our **DBM** technology is based on the idea that the best way to shape bandwidth is ensure that abusive or non-critical traffic is minimized in order to **guarantee bandwidth for critical applications**.
- DBM does this by dynamically monitoring session traffic and throttling traffic that exceeds administratively assigned metrics.



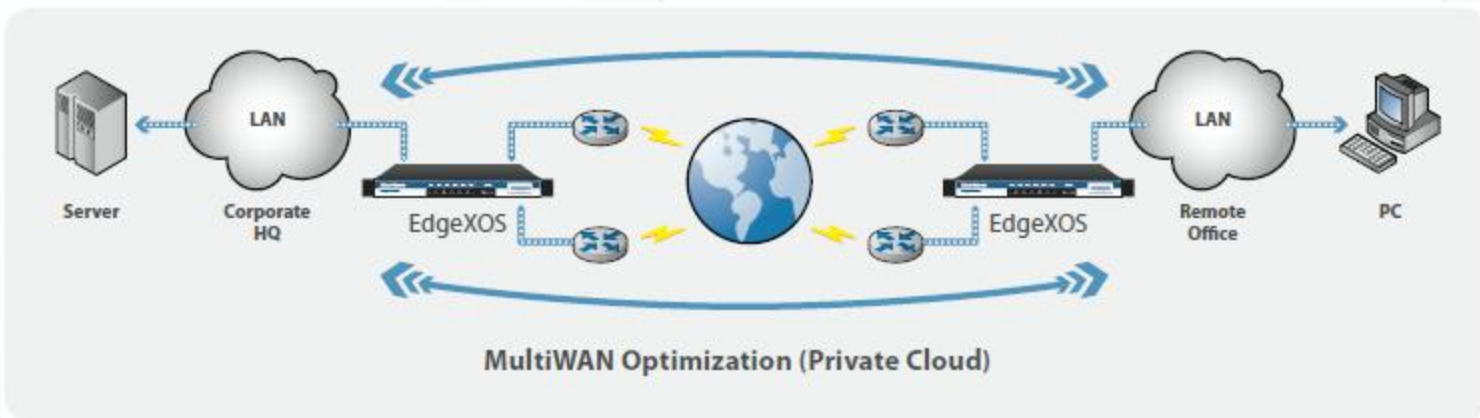
# Application Acceleration - MSA

- Our **MSA** technology (**Multi-Session Acceleration**) is able to improve network throughput by utilizing multiple remote services at the same time while also caching application content.
- MSA is unique in this capability and in its ability to bond download traffic across multiple ISP connections. ( $3\text{Mbps} + 5\text{Mbps} = 8\text{Mbps}$ )



# Site2Site - MultiWAN Optimization

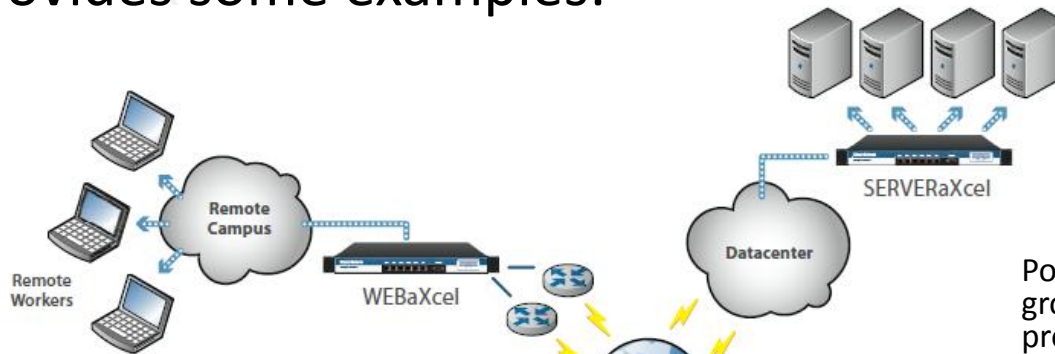
- Our **S2S** technology utilizes one or more paths between two or more sites in order to accelerate connectivity between those sites and then optimize that connectivity.
- S2S has the unique ability to **automatically and instantly failover application traffic** between remote offices in the event of a network outage.



# Deployment Options

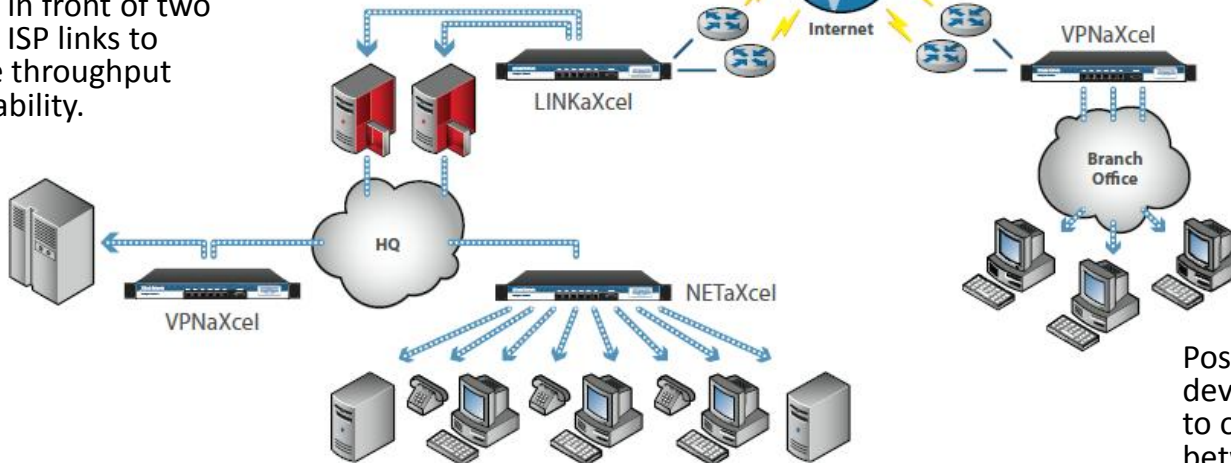
The EdgeXOS appliances can be deployed in a number of different ways depending on the solution required. This diagram provides some examples:

Position at the edge of the network to provide web content filtering and security.



Position in front of a group of servers to provide server load balancing.

Position in front of two or more ISP links to increase throughput and reliability.



Position two EdgeXOS devices between sites to optimize connectivity between the sites.

# XRoads Networks' Solutions

The EdgeXOS platform can solve a number of bandwidth application management issues and works with a number of industry partners in order to deliver superior performance.

## XRoads Networks Customer Solutions

The EdgeXOS has a modular architecture which allows network administrators to determine which features of the XRoads Networks Operating System (XOS) they wish to employ. The UBM enterprise products offered by XRoads Networks are unique in that they are all-in-one unified bandwidth management solutions.

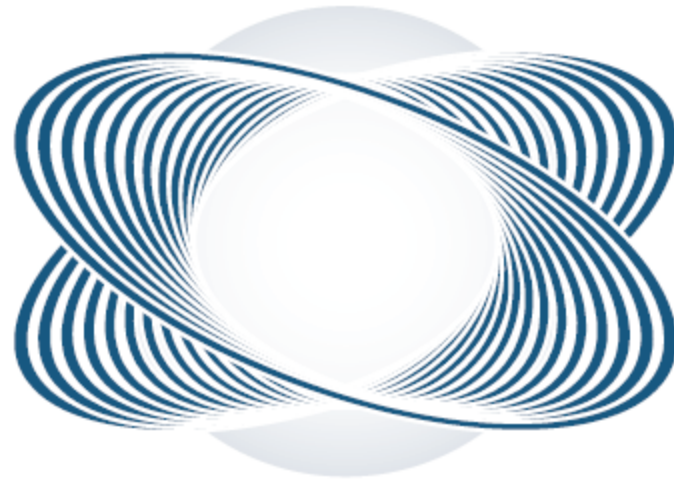
- × Reliable Cloud Computing
- × Zero Session Loss Redundancy
- × Accelerated Server Access
- × Accelerated Citrix Connectivity
- × Reliable VoIP Communications
- × Secure & Reliable Remote Access
- × Guaranteed Application Bandwidth
- × Accelerated File Sharing
- × Secure Web Content Filtering



# Verticals

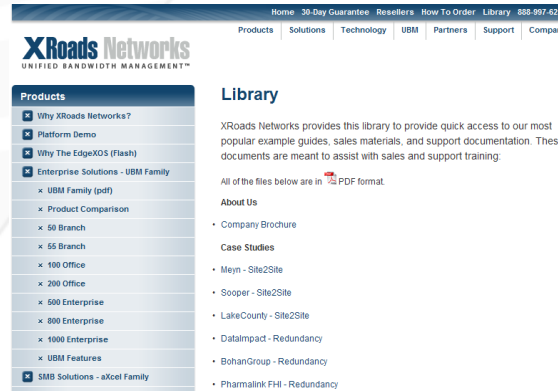
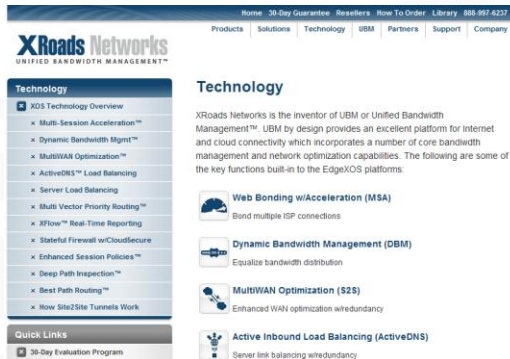
The EdgeXOS platform have specific implementation guides for specific vertical markets. Please ask an XRoads sales representative to obtain your specific implementation guide.

- Targeted Verticals (see specific implementation guides)
  - Multi-Tenant
  - Hospitality
  - Healthcare
  - Retail
  - Financial
  - Data Center
  - E-Commerce
  - Educational
  - Government
  - ISP



# Resources

- Need more information? Visit our websites at: [www.xroadsnetworks.com](http://www.xroadsnetworks.com) and [www.myxroads.com](http://www.myxroads.com)
- You can download case studies, white papers, product comparisons, and datasheets by clicking on the **Library** link in the top right hand corner of the site.
- Review our how our technology works by clicking on the **Technology** link on our website.
- Check out our online documentation and live appliance demo via the **Support** link on our website. Typically installations take less then 15 minutes.
- You can also contact an XRoads Networks sales engineer by calling us at **888-997-6237**.



# Summary

XRoads Networks is highly competitive with other products in the bandwidth management category. Our UBM and associated technologies are unique and “visionary”. Our focus on delivering unsurpassed ROI for our customers is unwavering. We at XRoads Networks believe that our products speak for themselves, test one today and listen for yourself.

